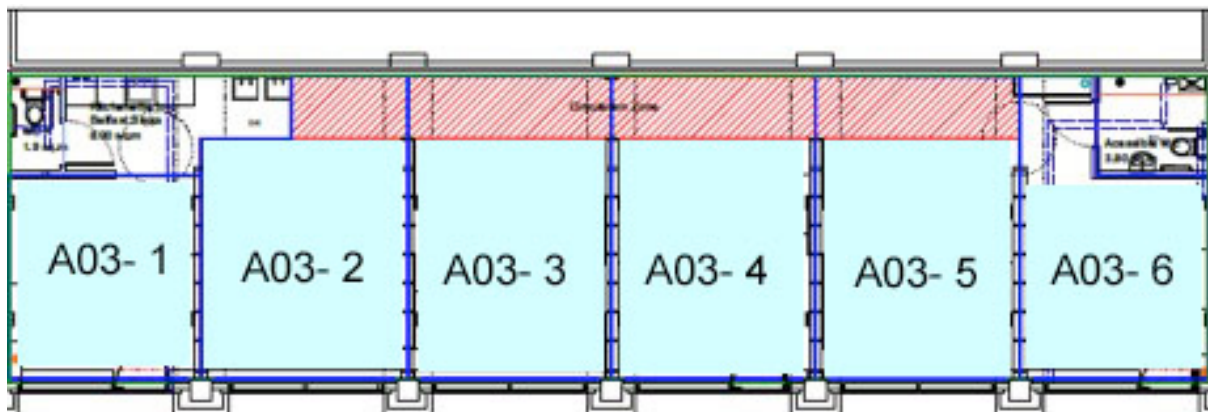


R.A.W Studios by Bow Arts



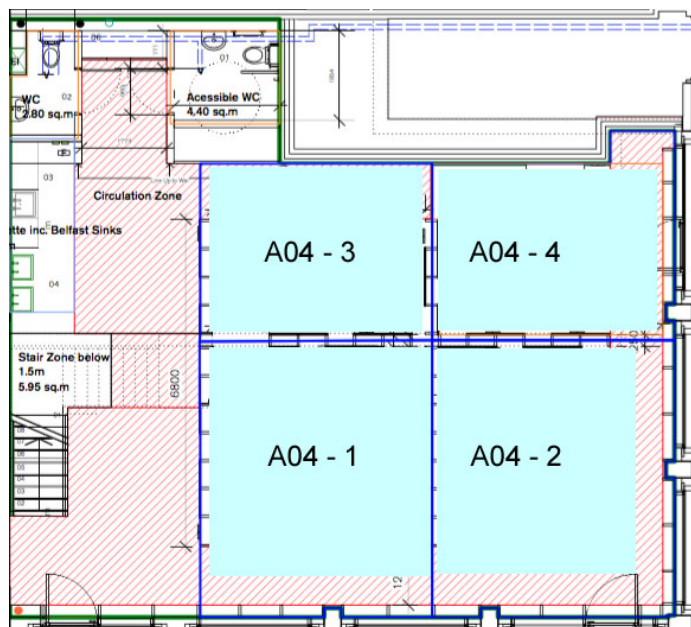
Bow Arts are managing the entire commercial estate on behalf of Notting Hill Housing, and are also seeking expressions of interest from a range of interesting commercial tenants for the office, retail, cafe and restaurant spaces within the site.

To initiate cultural activity on-site we are creating **The RAW Lab** : A place for ideas, action and reaction. The RAW Lab will host a changing programme of art, events, conversation and coffee, book exchange, film club and yoga and more. We are also exploring a range of independent food and drink offers to bring life to the early stages of this development.

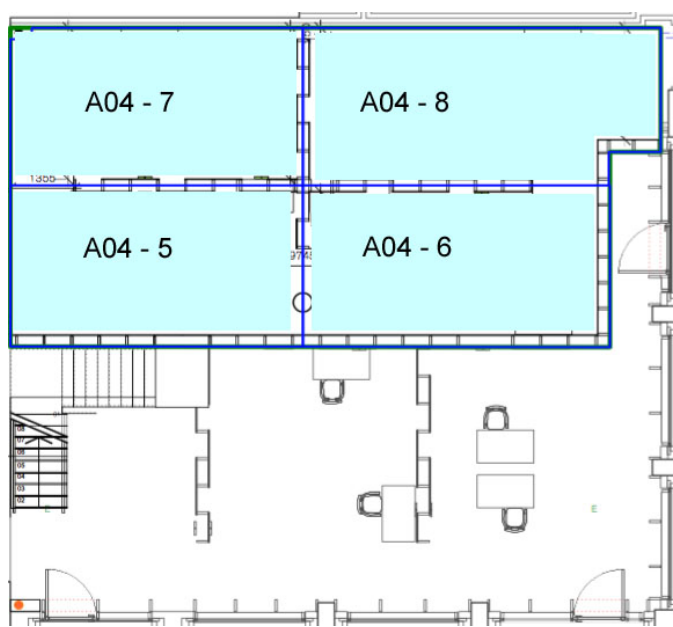


Studio:	sqft	sqm	Licence fee	service charge	electricity	TOTAL PER MONTH
A03- 1	178	16.5	£178	£30	£25	£233
A03- 2	256	23.7	£256	£34	£25	£315
A03- 3	277	25.7	£277	£47	£25	£349
A03- 4	277	25.7	£277	£47	£25	£349
A03- 5	277	25.7	£277	£46	£25	£348
A03- 6	206	19.1	£206	£35	£25	£266

R.A.W Studios by Bow Arts



Ground floor



Mezzanine floor

Studio:	sqft	sqm	Licence fee	service charge	electricity	TOTAL PER MONTH
A04- 1	300	28	£300	£51	£25	£376
A04- 2	312	29	£312	£53	£25	£390
A04- 3	194	18	£194	£33	£25	£252
A04- 4	226	21	£226	£38	£25	£289
A04- 5	200	18.5	£200	£34	£25	£259
A04- 6	187	17.4	£187	£32	£25	£244
A04- 7	214	19.8	£214	£36	£25	£275
A04- 8	250	23.3	£250	£43	£25	£318

Contact our studios team on 020 8980 7774 or property@bowarts.com to register your interest in a studio space here and to arrange to attend a viewing