

Bow Arts Venue Hire





Contents

About Bow Arts	4
Our mission	4
Property	4
Learning	5
The Nunnery Gallery	5
Introduction	6
Bow Road	7
Our Venues	8
Nunnery Gallery	8
Nunnery Café	12
Bow Arts' Courtyard Room	14
Bow Arts' Courtyard	16
Transport & Accessibility	20
Transport	20
Accessibility	21
Nunnery Cafe	22
Catering & bar offer	22
Supper clubs	23
Our sites	24
Lakeside Centre Media Space	24
Lakeside Centre Roof Terrace	26
Art in the Docks	28
The Lab at Oaklands Rise	30
Contact Us	32

About Bow Arts

Since 1994, Bow Arts has nurtured London's diverse creativity and talent. As an arts and education charity, our services support the growth of sustainable local creative economies. Over 500 artists, designers, and makers are affiliated with Bow Arts through our workspaces, affordable housing for creatives, and award-winning schools and young people's learning programme. We also operate the Nunnery Gallery - a contemporary art gallery and project space established in 1998 which has a respected history and a growing international reputation.

Our Mission

We create inspirational environments where artists and communities interact, learn and develop.

Property

Bow Arts is a not-for-profit organisation registered as a Gift Aid Charity. Bow Arts currently manages 15 studio sites, providing over 400 affordable studios and homes for artists, designers and makers across London.





Learning

Bow Arts works with artists to deliver an innovative programme of workshops, projects and training in schools. We work collaboratively with schools to create bespoke projects that meet the needs of students, making arts learning accessible and inclusive.

We believe in the value of arts and culture in our society and that it is the right of every child and young person to have access to it through providing high quality programmes and excellent value for money. Our programme creates impactful learning experiences that improve attainment, confidence and wellbeing for all students.

The Nunnery Gallery

Housed in a former 19th-century convent building, surrounded by our artist studios, the Nunnery Gallery is our not-for-profit art space. Our programme pushes boundaries with an original and creative approach that explores the stories of east London and celebrates today's artistic talent. Open to the public six days a week, all exhibitions are free to enter.

Our gallery's unique and captivating exhibitions delve into the rich history of east London and champion some of the most exciting contemporary artwork being made in London today. Our programme includes the international moving image showcase Visions in the Nunnery, our much anticipated annual Bow Open and our locally inspired RAW Materials.



Introduction

Bow Arts has multiple venues for hire at our main Bow Road space in east London. Whether you are looking to hold a drinks reception, a team building day, a workshop or anything in-between, Bow Arts would be delighted to accommodate.

Bow Arts' venues are available for hire on an hourly or weekly basis. Longer term hires will also be considered. Our spaces are flexible and can be used for both public and private events, including exhibitions, meetings, presentations, performances, evening receptions, film/photography shoots, workshops, press launches, exercise classes and more.

We have a range of equipment that comes as standard with every space, as well as audio-visual technology and bespoke equipment such as gazebos available to hire for a small fee.

With a friendly and reliable team to assist you, Bow Arts offers a package of support to help plan and deliver your event. We provide assistance every step of the way to help ensure your event is a success.



Bow Road

Our primary site in Bow comprises of the Bow Arts Office, almost 100 artist studios, an outdoor courtyard, the Nunnery Gallery and the Nunnery Café. We are located in the heart of London's Artist Quarter and a short distance from the Stratford Olympic Park, with a dedicated entrance straight off Bow Road.



Our venues

Nunnery Gallery

The Nunnery Gallery is a unique building situated on the ground floor of a former convent, with neo-gothic revival detailing, original Victorian tiles and gothic arches.

The gallery sits alongside the Nunnery Café, and opens onto a charming, secluded alleyway with a unique light installation suspended in the air – the perfect setting for evening drinks.

Surrounded by Bow Arts' artist studios, this distinctive space provides a welcoming environment and a unique backdrop for an array of exhibitions and events.

Location Nunnery Gallery, 181 Bow Road, London E3 2SJ

Uses Exhibitions, screenings, performances, photography shoots, conferences, meetings, workshops, evening receptions, private dinners, press launches, and more.

Features Step-free access, accessible toilet, baby changing facilities, Wi-Fi, Audio/Visual capabilities, tables, chairs, Nunnery Café on-site.

Capacity 150 standing, 60 seated

Measurements 975 sq. ft., 14 ft. height



Availability

Exhibitions

The Nunnery Gallery is available to hire for short-run exhibitions outside of our scheduled programme. The Gallery opening times are Tue-Sun, 10am-4pm. Please enquire for information on upcoming dates.

Events

During exhibitions, the gallery is available to hire for events all day on Mondays, and from 5-10pm Tue-Sun, as long as the event doesn't disturb the exhibition display. Outside of exhibitions, the gallery is available to hire at any time.

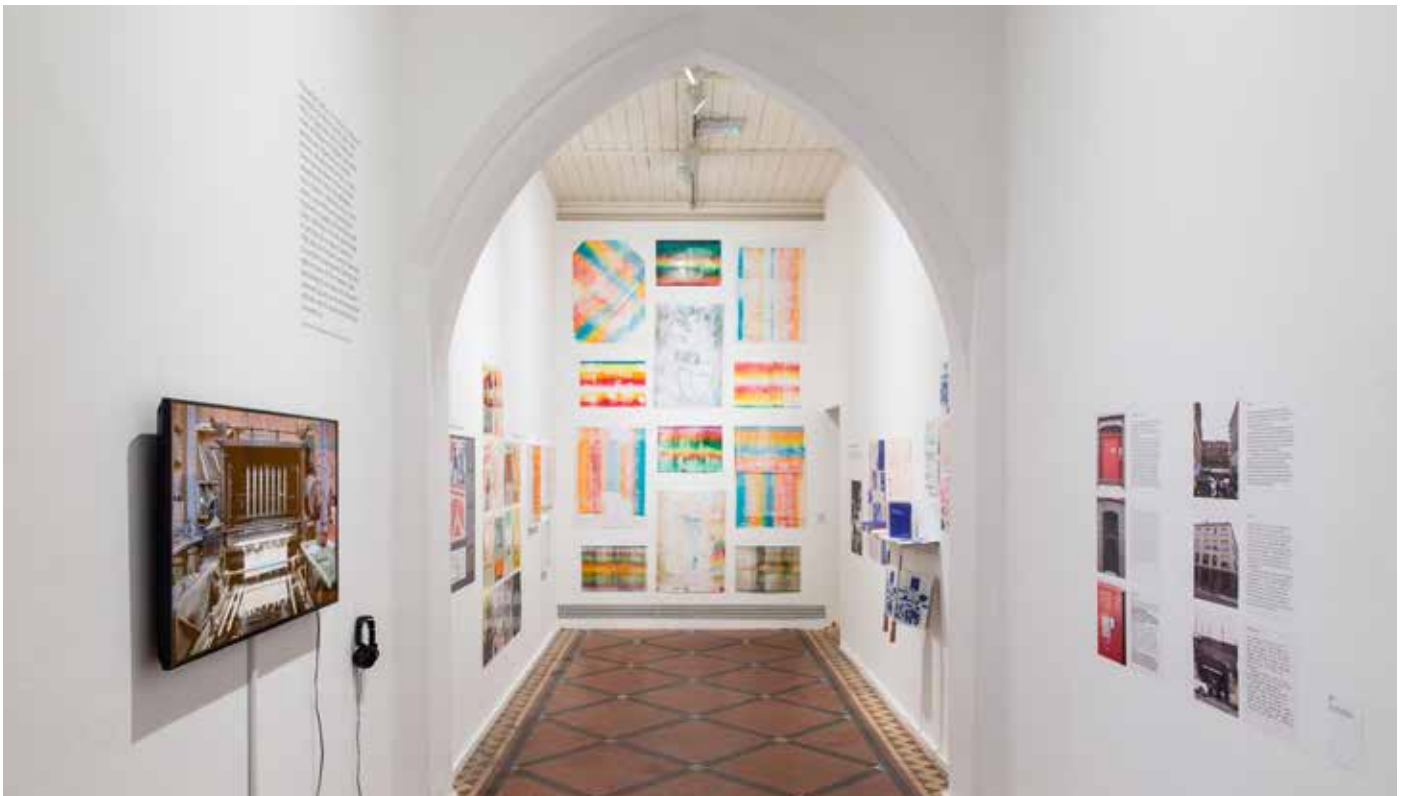
Costs

Weekly rental

£2,000 / £1,500 + 20% VAT (students, local residents, charitable enterprises and Bow Arts artists) for one week including installation / de-installation days, as well as one evening for an event / private view (6-9pm).

Hourly rental

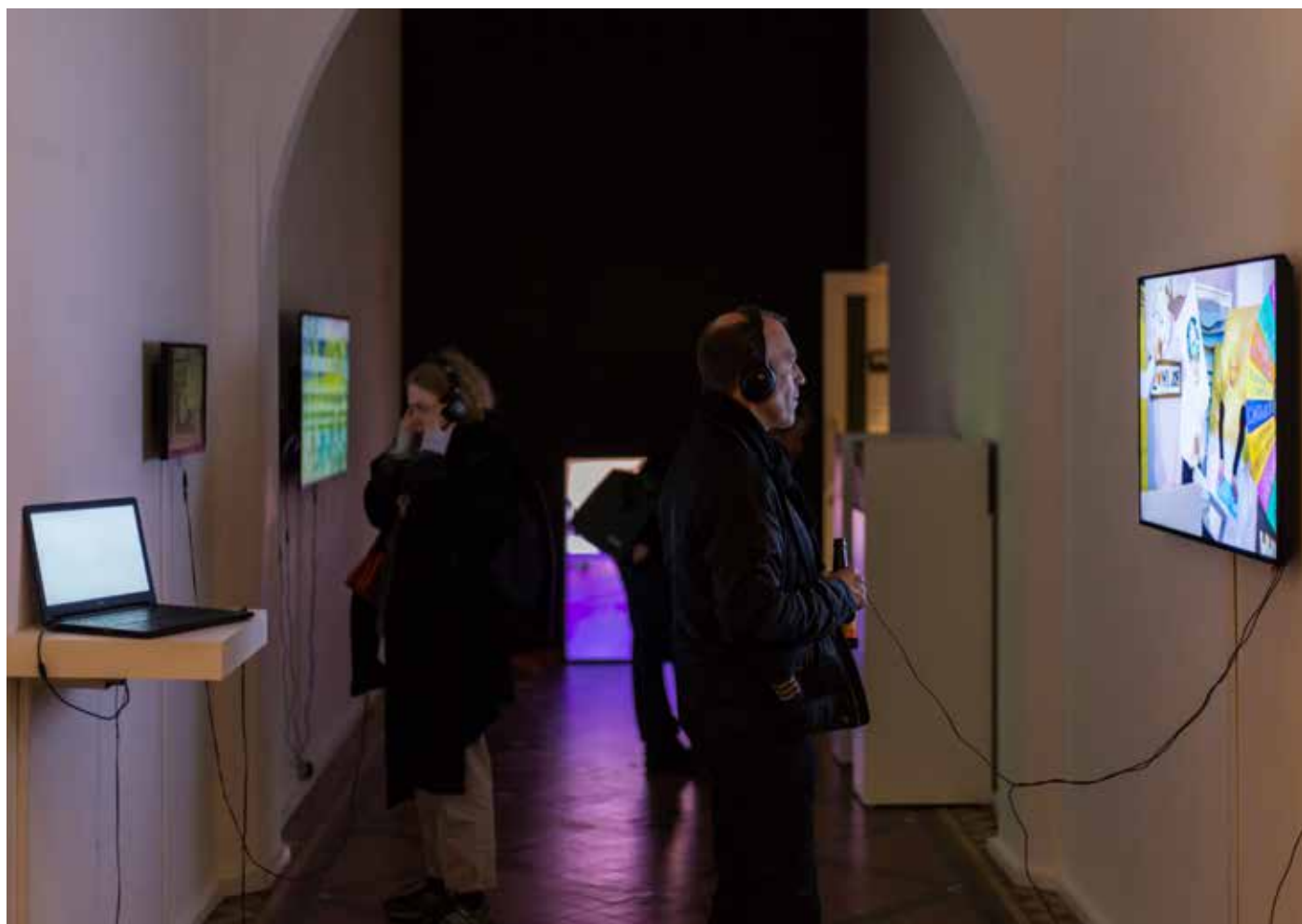
£100 / £75 + 20% VAT (students, local residents, charitable enterprises and Bow Arts artists) within working hours (9am-5pm). Outside of working hours there is an additional fee of £13.85/hr for the key-holder.



Additional Info

- » Weekly gallery hire includes a curatorial meeting with the Arts & Events Team for support.
- » All hires include assistance in marketing your show through some of Bow Arts' social media channels (e.g. Instagram Stories and Twitter – for which we have near 90,000 followers).
- » We can recommend a Technician to help with your installation if needed, but they would have to be paid separately.
- » The Nunnery Café must provide all catering and bar services for this space. Please enquire for costs.
- » Evening events have a curfew of 10pm.





Nunnery Café

The Nunnery Café runs alongside the Nunnery Gallery, and provides our visitors and locals with a place to unwind, have a hot drink and enjoy some tasty food. We serve HeySisterCoffee - an ethical, female-led, hand-crafted roaster – and a vibrant menu including locally made cakes and pastries as well as soups, sandwiches and more for lunch. It also houses our Nunnery Gallery shop, which offers limited edition prints, original gifts and homewares from local and Bow Arts artists. All café proceeds go back into supporting the Nunnery Gallery exhibition and event programme

This bright, trendy space opens onto a charming, secluded alleyway with a unique light installation suspended in the air – the perfect setting for evening drinks.

Location Nunnery Café, 181 Bow Road, London E3 2SJ

Uses Meetings, workshops, birthday or anniversary celebrations, evening receptions, private dinners and supper clubs. The Nunnery Café must provide catering or a bar service for events in this space.

Features Step-free access, accessible toilet, baby changing facilities, Wi-Fi, kitchenette, tables and chairs available.

Capacity 50 standing, 30 seated

Measurements 377 sq. ft. 14 ft. height





Availability

Evening events from 5-10pm (Mon-Sun).

Costs

£100 / £75 per hour (students, local residents, charitable enterprises and Bow Arts Artists) including bar staff.

For community-led projects, the Café may be hired on a minimum spend basis. Please enquire for more details.

Catering costs vary, please enquire for more details.

Additional Info

- » The Nunnery Café must provide catering and/or a bar service for all events in this space.
- » Evening events have a curfew of 10pm.



Bow Arts' Courtyard Room

This bright and airy space comprises of an informal meeting area, kitchenette and two toilets. With floor to ceiling windows, the Courtyard Room has a flexible setup with sofas, an in-built projector and tables and chairs.

Enclosed in Bow Arts' private outdoor courtyard and surrounded by artist studios, this multi-purpose space provides a comfortable yet professional environment.

Location	Bow Arts Trust, 183 Bow Road, London, E3 2SJ
Uses	Conferences, screenings, parties, workshops and training.
Features	Step-free access, accessible toilet, Wi-Fi, in-built projector and screen, kitchenette suitable for preparing drinks and snacks, tables, chairs and sofas.
Capacity	50 standing, 30 seated
Measurements	355 sq. ft.
Availability	Evening events from 6-10pm (Mon-Fri) and all day on weekends.
Costs	£80 / £60 + 20% VAT charge (Students, local residents, charitable enterprises and Bow Arts Artists)
Additional Info	The Nunnery Café can provide catering or bar services for this space. Please enquire for more details.





Bow Arts' Courtyard

Set-back from the main road, this light and spacious enclosed courtyard provides a brilliant backdrop for all kinds of outdoor private and public events.

With a small covered area for protection from the elements, this multi-purpose space is ideal for gatherings and performances of all kinds. All hires of the courtyard include the adjacent Courtyard Room, which comprises of an informal meeting area, kitchenette and two toilets. The Courtyard Room has a flexible setup with sofas, an in-built projector and tables and chairs.

Surrounded by Bow Arts' artist studios, this versatile space provides a welcoming environment suitable for a variety of events.

Location	Bow Arts Trust, 183 Bow Road, London, E3 2SJ
Uses	Wedding receptions, private parties, markets, screenings, supper clubs, performances, photoshoots, workshops and exercise classes.
Features	Step-free access, accessible toilet, Wi-Fi, power outlets, picnic benches, kitchenette – suitable for preparing drinks and snacks, covered area for music / catering / seating.
Capacity	300 standing
Measurements	3500 sq. ft.
Availability	Evening events from 6-10pm (Mon-Fri) and all day on weekends.



Costs

Day rate: £1000 (plus 20% VAT charge) – includes 5 hours of key-holder time. If the event is longer than 5 hours (including set-up and takedown), every additional hour is charged at £13.85/hr for the key-holder. Discounted price of £750 available for students, local residents, charitable enterprises and Bow Arts Artists.



Transport & accessibility

Transport

Nearest station(s)

Bow Road (District and Hammersmith and City lines) is a 7-minute walk away, and Bow Church (DLR) is a 3-minute walk away.

Bus

205, 25, 425, A8, D8, 108, 276, 488 and 8 all service the surrounding area.

Cycle

CS2, bicycle parking is located at Bow Church Station. The nearest Santander Cycles docking station is at Bow Church Station.



Accessibility

Wheelchair access

The venues on our Bow Road site are fully wheelchair-accessible, with step-free access throughout from street level.

Dogs

Guide dogs, hearing and registered assistance dogs are welcome.

Toilets and baby care facilities

Accessible toilets and baby changing facilities are available.

For visually and hearing impaired visitors

Large print information about exhibitions, events and facilities can be made available - please contact us in advance of your visit. Unfortunately the venues do not have a hearing loop system.

Parking

Accessible parking can be available on-site, please contact us in advance of your visit. Blue badge parking can also be found 500m away on Fairfield Road.



Additional Info

- » The courtyard provides access to some of our Bow Road artist studios, so continuous access is required. Studio holders have their own key to the courtyard and would have prior notice about upcoming events, so would not cause any disruption to your event.
- » For parties of 150 or more, extra toilets / portaloos will be required.
- » Gazebos and PA sound system are available for hire.
- » The Nunnery Café must provide all catering and bar services for this space. We can provide a standard paid bar serving East London Liquor Company Gin and Vodka cocktails, plus beer, wine, and a range of non-alcoholic drinks - all included in the hire price.
- » Evening events have a curfew of 10pm.





More about the Nunnery Café

Food, catering & bar offer

Nunnery Café, 181 Bow Road, London, E3 2SJ

www.bowarts.org/nunnery-café

Running alongside our Nunnery Gallery, enjoy a coffee in our cosy Nunnery Café, serving a selection of locally-made cakes, pastries, toasties, soups and other delicious treats. Tucked away down Bow Arts Lane and adjoined to the Gallery, it's the perfect place to unwind or meet friends. We are open Monday to Saturday 9am-4pm, and Sunday 10am-4pm. Eat-in and takeaway options are both available.

We serve HeySisterCoffee – a female-led, hand-crafted roastery that's ethical, empowering and sustainable, with 3% of sales funding projects that support women. – alongside a vibrant menu including locally-made cakes and pastries as well as soups, sandwiches and more for lunch. All café proceeds go back into supporting the Nunnery Gallery exhibition and event programme.

The Nunnery Café must be used for any hires taking place at our Bow Road venues. We can provide a paid bar serving East London Liquor Company Gin and vodka cocktails, craft beers, wines and soft drinks. We can also provide small bites and buffet style food for your event, catering to all dietary requirements.

Please contact nunnerycafe@bowarts.com to find out more about our available catering options.



Supper clubs

Alongside its regular food and drink offer, the Nunnery Café also partners with chefs and culinary collectives to produce unique supper clubs and dining experiences for our visitors and locals.

These range from cosy Nepalese supper clubs taking cues from food lovingly made by grandmas, mothers, and aunts, to Kurdish and Persian *Mehmoonis* centring joy, eating, and being in community with each other.

Both the Nunnery Café and our outdoor Bow Arts Courtyard are available to host supper clubs, depending on the needs of our partners and the supper club.

If you're interested in collaborating with us on a supper club, please contact nunnerycafe@bowarts.com to find out more.



Other sites

Lakeside Centre Media Space

The media space is a 2nd floor project space inside the Lakeside Centre, an iconic brutalist building with stunning views of Southmere Lake and the area's famous skyline, is a Thamesmead landmark. The Lakeside centre is home to 40 creative workspaces, a café and training kitchen, an early years nursery, and an affordable darkroom.

Location	Lakeside Centre, Bazalgette Way, London, SE2 9AN
Uses	Exhibitions, screenings, performances, photography shoots conferences, meetings, workshops and evening receptions.
Features	Step-free access, accessible toilet, audio/visual capabilities, chairs, tables, Y-on-the-lake café on site
Capacity	35
Transport	Nearest Station(s): Abbey Wood via national rail and Elizabeth line Bus: 117, 180, 229, 401, 472, 601, 602, 669, N1, Parking: Limited on-site parking available.





Availability

Monday to Sunday, 9am-10pm

Costs

Weekly rate: £700

Daily rate (8 hours): £160

Hourly rate: £30

Outside of working hours (9am-5pm)
there is an additional fee of £12.50/hr
for the key-holder



Lakeside Centre Roof Terrace

Iconic roof terrace at Lakeside centre which looks out to the stunning views of Southmere Lake and the area's famous skyline, is a Thamesmead landmark. The Lakeside centre is home to 40 creative workspaces, a café and training kitchen, an early years nursery, an outdoor cinema, and an affordable darkroom.

Location	Lakeside Centre, Bazalgette Way, London, SE2 9AN
Uses	Fitness classes, screenings, performances, photography shoots, workshops, and evening receptions.
Features	Step-free access, accessible toilet, Y-on-the-lake café on-site, PA system, marquees and weights.
Capacity	110 standing
Transport	Nearest Station(s): Abbey Wood via national rail and Elizabeth line Bus: 117, 180, 229, 401, 472, 601, 602, 669, N1, Parking: Limited on-site parking available.
Availability	Monday to Sunday 9am – 10pm
Costs	Weekly rate: £700 Daily rate (8 hours): £120 Hourly rate: £30. Outside of working hours (9am-5pm) there is an additional fee of £12.50/hr for the key-holder.





Thamesmead Social Café, Lakeside Centre

The Thamesmead Social Café is a kitchen, bar, & event space inside the Lakeside Centre. Featuring a spacious indoor and outdoor seating area, this space overlooks the stunning Southmere Lake.

Location	Lakeside Centre, Bazalgette Way, London, SE2 9AN
Uses	Private dinners, receptions, meetings, workshops, birthday or anniversary celebrations.
Features	Step free access, accessible toilet, Wi-fi, power outlets, tables, chairs, sofas.
Capacity	110 standing
Transport	Nearest station(s): Abbey Wood (National Rail, Elizabeth Line) Bus: 117, 180, 229, 401, 472, 601, 602, 669, N1. Parking: Drop-off only.
Availability	The Café is open 9am-4pm Monday to Friday, 10am-4pm Weekends, 5pm-9pm Friday and Saturday evening.
Contact	Steve Field (Café Manager) thamesmeadsocial@gmail.com

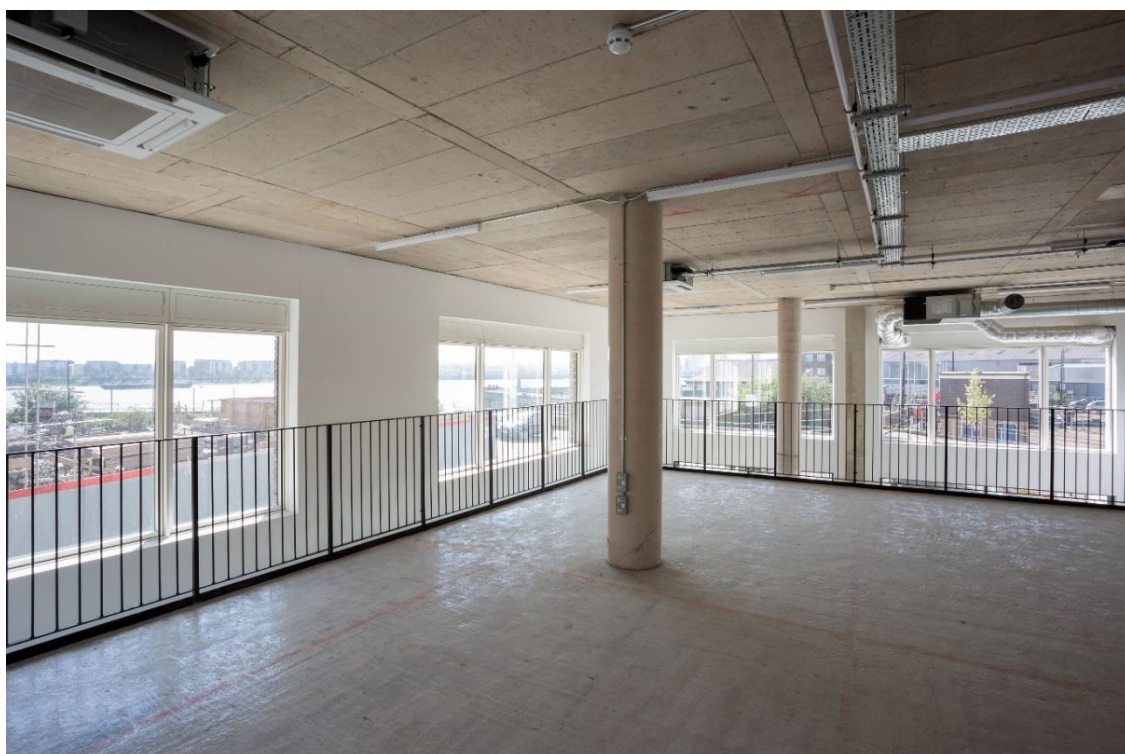


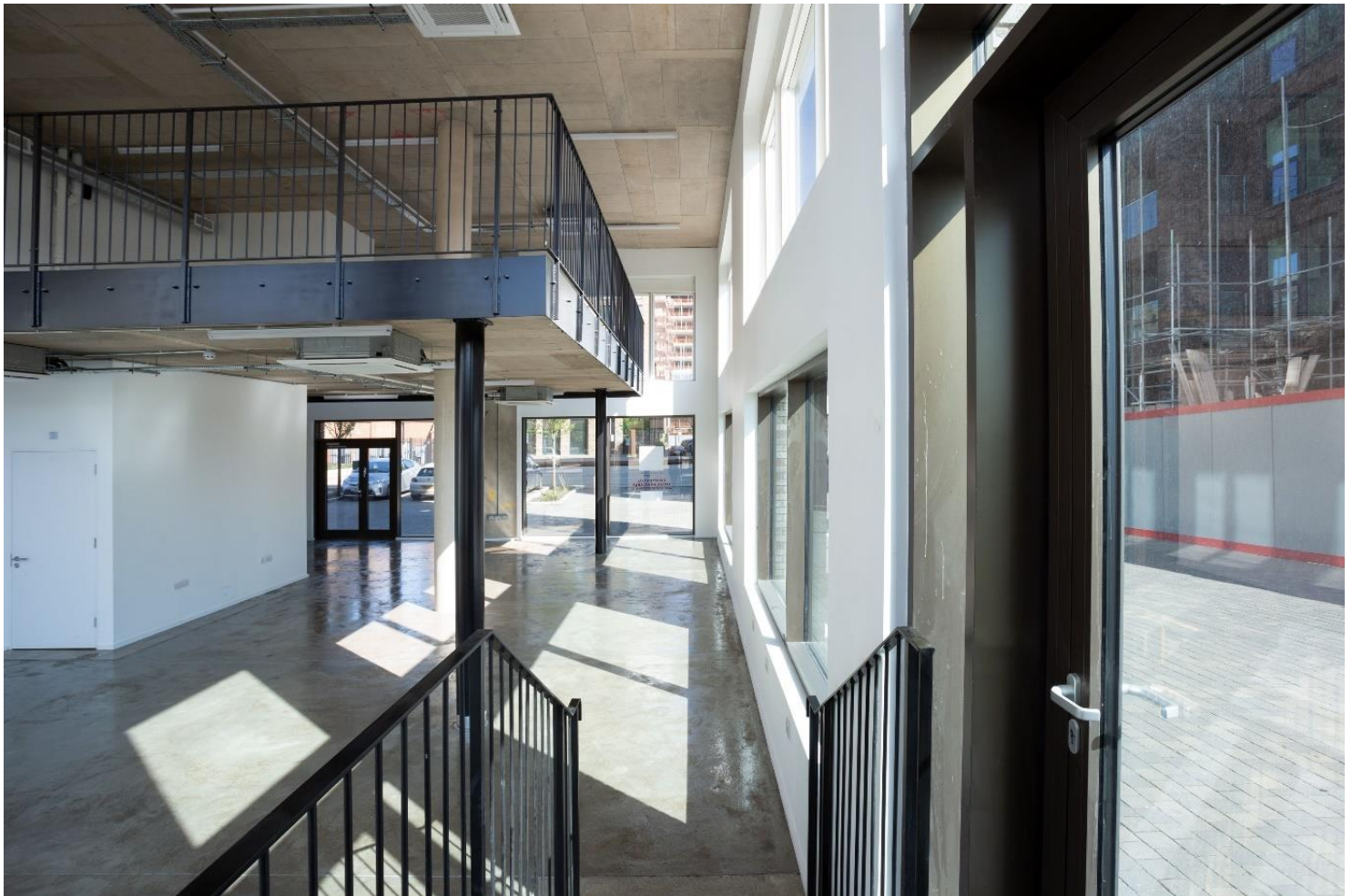
17-18 Lower Dock Walk

17-18 Lower Dock Walk is a 2,313 sq. ft. ground floor space, featuring a second-floor mezzanine. The double height, wrap-around windows on three sides of the room provide plenty of light and views out towards Gallion's Point Marina. There are ground floor toilets and step free access to the mezzanine via a lift.

Local amenities include car parking, a small supermarket, an award-winning restaurant and a popular café. Gallions Reach DLR Station is a 10-minute walk away.

Location	17-18 Lower Dock Walk, Royal Albert Wharf, London, E16 2GT
Uses	Exhibitions, screenings, performances, photography shoots, conferences, meetings, workshops, evening receptions, private dinners, press launches, and more.
Features	Two-storey space, step-free access, accessible toilet, Wi-Fi.
Measurements	2,313 sq. ft.
Transport	Nearest station(s): Gallions Reach DLR Bus: 101, 262, 474 Parking: No parking available
Availability	Available by arrangement. Please note, this is a residential area between 8-11pm.
Costs (excl. VAT)	Daily rate (8 hours): £600 Hourly rate: £75/100





Pump House Square

Pump House Square is an exterior 8,753 sq. ft. location, sitting next to the dock and historical Royal Docks Pumping Station in the Royal Albert Wharf complex. 1,111 sq. ft. of the area is a raised wooden platform. Positioned at the heart of the development, Pump House Square is a prime space for community events and showcases.

The terrain is paved with a largely flat aspect. The square is bordered by bollards and lighting which automatically turns on when it gets dark. There is soon to be installed electrical power supply to the square. Local amenities include car parking, a small supermarket, an award-winning restaurant, and a popular café. Gallions reach DLR Station is a 10-minute walk away.

Location	Pump House Square, Royal Docks Pumping Station, Royal Albert Wharf, London, E16 2XY
Uses	Community events, showcases, performances.
Features	Raised wooden platform, partial lighting, café close-by.
Transport	Nearest station(s): Gallions Reach DLR Bus: 101, 262, 474 Parking: No parking available
Availability	Available by arrangement. Please note, this is a residential area between 8-11pm.
Costs (excl. VAT)	Daily rate (8 hours): £600 Hourly rate: £75/100



27 Shackleton Way

A ground floor, large space with access to lighting and water. The room boasts floor-to-ceiling windows on two sides of the room, providing ample amounts of natural lighting. This space also features a large chalkboard, and a small storage space.

Location 27 Shackleton Way, Royal Albert Wharf, London, E16 2XW.

Uses Community events, showcases, performances, exhibitions, workshops.

Features Large chalkboard, storage space, lighting, step-free access, café nearby.

Transport Nearest station(s): Gallions Reach DLR Bus: 101, 262, 474
Parking: No parking available

Availability Available by arrangement. Please note, this is a residential area between 8-11pm.

Costs Daily rate (8 hours): £300
Hourly rate: £35/50
(excl. VAT)



Well Bean Co Cafe

The Well Bean Co Café is a community café and event space in the Royal Docks, East London. With a large ground floor space, and recently refurbished upper mezzanine area, this café is known to host numerous well-being workshops.

Location	Well Bean Co, 1-2 Upper Dock Walk, London, E16 2GU
Uses	Private dinners, receptions, meetings, workshops, birthday or anniversary celebrations.
Features	Wi-Fi, tables, chairs, step-free ground floor access, accessible toilet.
Transport	Nearest station(s): Gallions Reach DLR Bus: 101, 262, 474 Parking: No parking available
Availability	The Café is open 7:30am-6pm on weekdays, 9am-5pm on weekends.
Contact	hirespace@wellbeanco.com



The Lab at Oaklands Rise

The Lab is A community space, café and arts centre, enabling and facilitating a programme of arts, workshops, and events

Location	The Lab at Oaklands Rise, Oaklands Rise, 19 Green Street, London NW10 6FT
Uses	Exhibitions, screenings, performances, photography shoots, conferences, meetings, workshops, evening receptions, private dinners, press launches, and more.
Features	Wi-fi, step-free access, accessible toilet, Audio/Visual capabilities, tables, chairs, café on-site
Transport	Nearest station(s): North Acton (Underground), Willesden Junction (Overground/Underground) Bus: 260, 266, 440, 487, BL-1, BL-2 Parking: drop off only
Availability	Monday to Sunday 9am – 9pm
Costs	Daily rate (8 hours): £130 Hourly rate: £20 If the booking is during the lab opening hours requiring the space to be closed to the public a minimum order will need to be agreed

Photographers

Rob Harris

www.robharrisphotography.com | robertharr1s@yahoo.co.uk | +44 (0)7735341378

Rob Harris works with artists and arts organisations to document events, projects, exhibitions, workshops and performances. He has worked with clients including Tate Modern, Serpentine Galleries, Whitechapel Gallery, Turner Contemporary, House of Illustration and Camden Arts Centre.



Alberto Romano

www.albertoromano.co.uk | alberto@albertoromano.co.uk

Alberto Romano works in portraiture photography combining a hyper-realistic style with experimental lighting setups. His subjects are often unusual characters, and he portrays these personalities through the use of bright colours and unconventional poses. Alberto's clients include Victoria Beckham, Selfridges, The Guardian, HypeBeast, Swarovski and Nickleodeon.



Rachel Cherry

www.rachelcherry.co.uk | mail@rachelcherry.co.uk | +44 (0)7835092078

Rachel Cherry is one of the leading dance and performance photographers in the UK. Rachel originally studied dance at Laban, where she became interested in working with photography, installation and site specific work. Her clients include Laban, Southbank Centre, Foundation for Community Dance and Big Dance.



Contact us

Bow Arts Trust

183 Bow Road, London E3 2SJ
Mon to Fri, 9am – 5pm

Nunnery Gallery

181 Bow Road, London E3 2SJ
Tues to Sun, 10am – 4pm

Nunnery Café & Shop

181 Bow Road, London E3 2SJ
Mon to Sun, 10am – 4pm

Contact

nunnery@bowarts.com
bowarts.org



REGISTERED CHARITY #1046958

